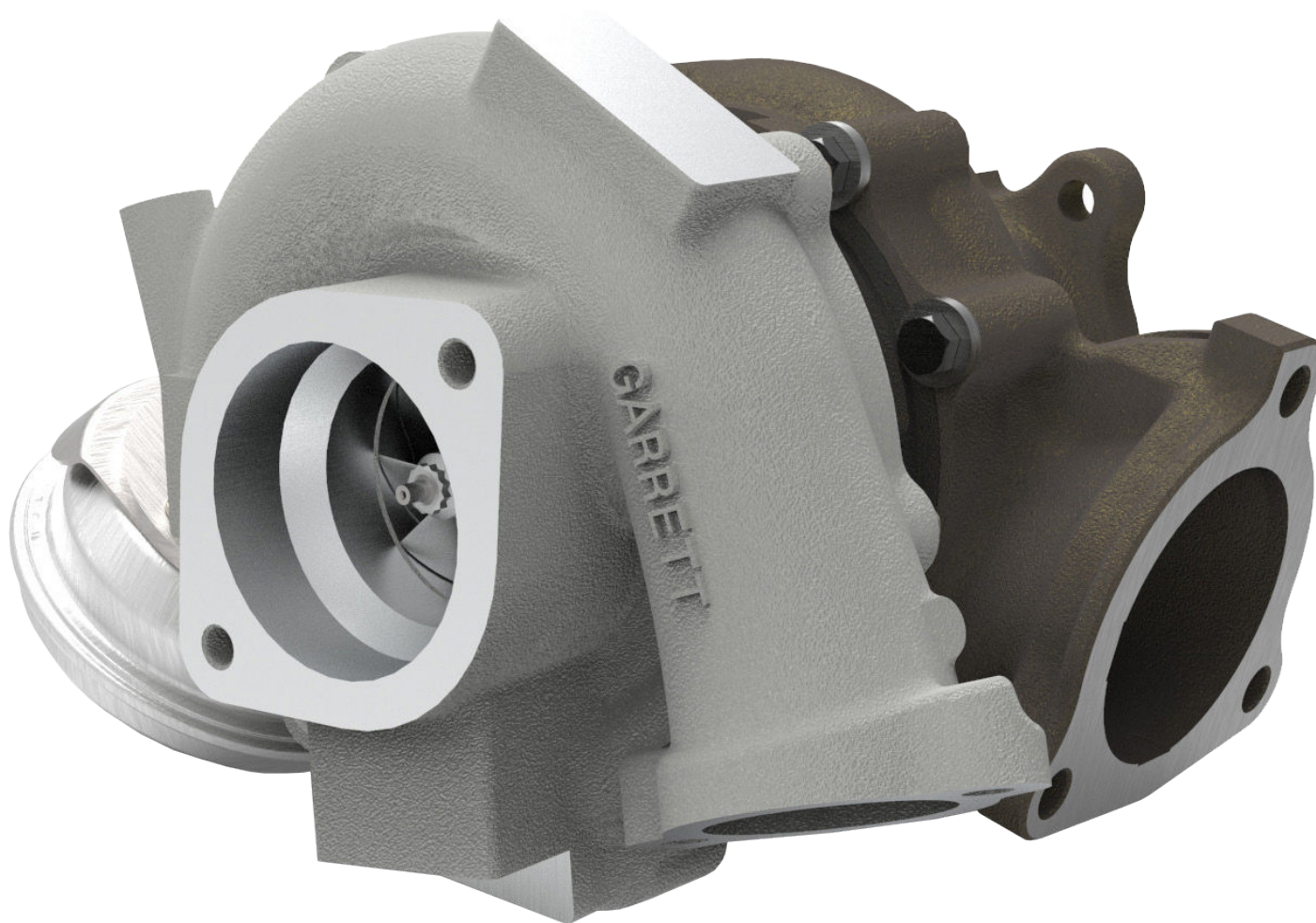




**PowerMax™ Direct Fit Turbocharger Upgrade
Supports up to 208kW***

Part number 881604-5001s is compatible with
2007-2018 Toyota Land Cruiser 4.5L turbo diesel



*Product rendering shown. Actual product may have minor variances.

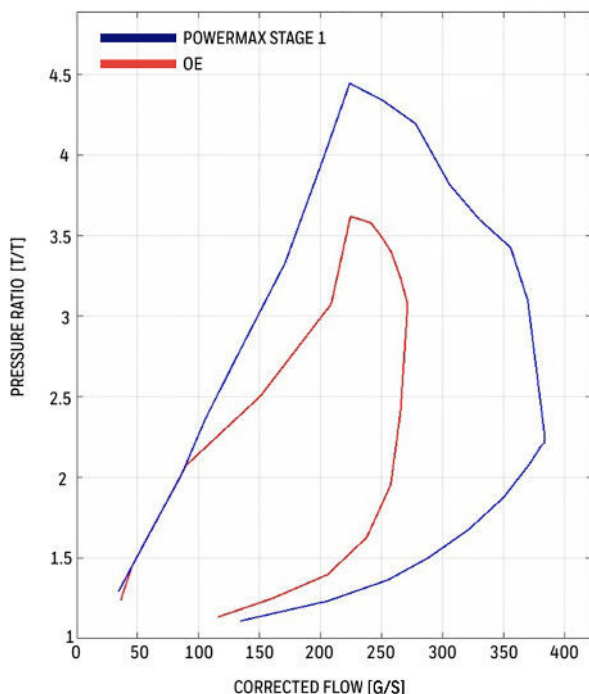
*Estimated. Performance results of this product are highly dependent upon your vehicle's modifications and tuning/calibration. The target power represented above has been calculated based strictly on choke flow of the compressor map (total turbo capability), which represents the potential flywheel power.

POWERMAX™ PERFORMANCE TURBOCHARGER UPGRADE

Direct replacement for 2007-2018 Toyota Land Cruiser 4.5L 1VD-TFV turbo diesel
Supports up to 208kW*

The Garrett® PowerMax™ direct fit turbocharger is designed for the 4.5L 1VD-TFW V8 diesel engine platform found in the 2007-2018 Toyota Land Cruiser. The forged, fully machined compressor wheel designed for the G Series product line increases flow by 20% over the OE wheel. With the correct engine calibration, this enables the engine to be tuned up to 208kW from the OE standard 173kW. All Garrett® PowerMax™ direct fit turbochargers are outline interchangeable with the OE turbocharger ensuring a perfect fit every time.

Compressor Map Comparison Garrett® PowerMax™ vs OE



Features:

- G Series compressor wheel aerodynamics
- Wider compressor map for improved performance
- 20% more flow than the OE turbocharger
- VNT variable geometry technology



*Product rendering shown. Actual product may have minor variances.

Turbo	Part Number	881604-5001S
	Model	GTA2359V
	Replaces	775095-0001 (5001S) 842127-0001 (5001S)
Vehicle	Make	Toyota
	Model	Land Cruiser
	Year	2007-2018
Engine	Type	4.5 L 1VD-FTV V8 turbo diesel
	Fuel	Diesel
	Emissions	Euro IV
	Cylinders	8