

# SUBARU WRX INTERCOOLER UPGRADE TRAINING

**Garrett**  
ADVANCING MOTION

## 2015+ Subaru WRX 2.0L



### 2015+ Subaru WRX 2.0L

PN: 891185-6001

Supports up to 530 Horsepower

*\*Not engineered to fit any other applications*

## Construction

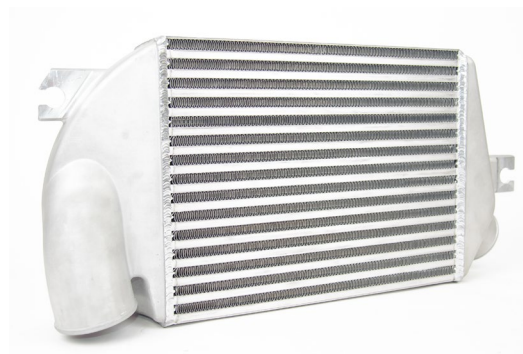
Cast aluminum end tanks

Advanced offset fin design

TIG welded for improved strength

Vacuum brazed bar-and-plate design

70% larger aluminum intercooler core



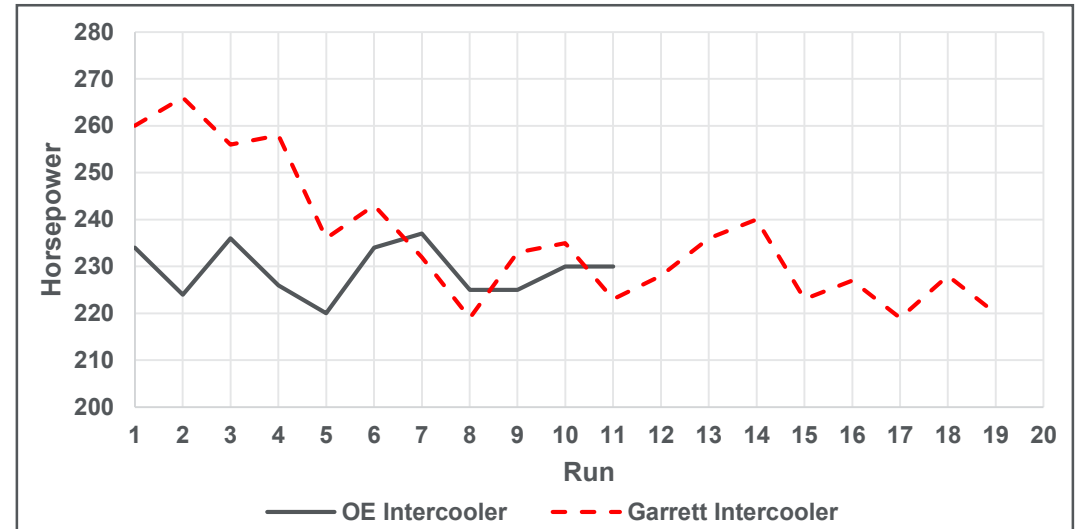
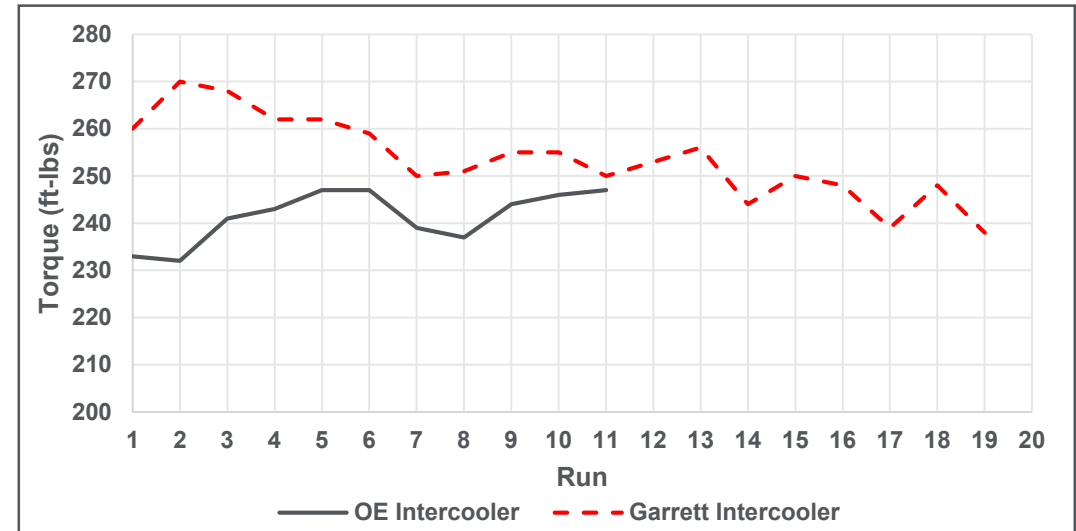
# Performance: Dyno Testing for Heat Saturation



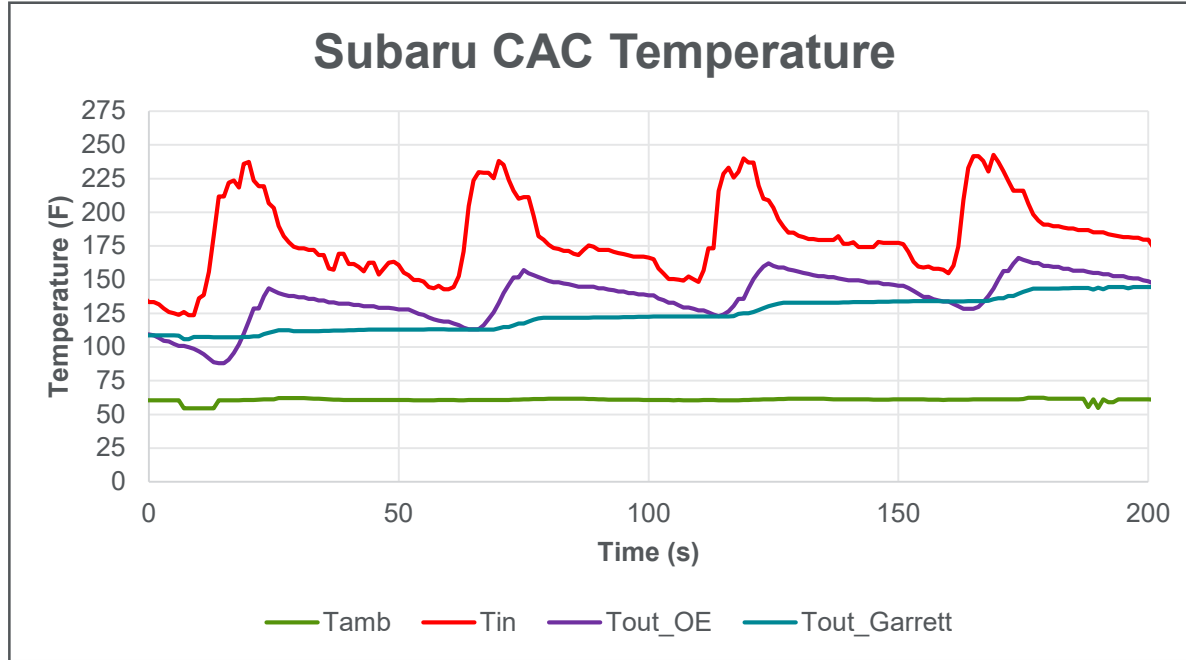
Multiple back-to-back dyno pulls in a wind tunnel to simulate real world driving conditions.

**\*\*Air velocity is synchronized with vehicle speed\*\***  
30 °F intake manifold temperature reduction

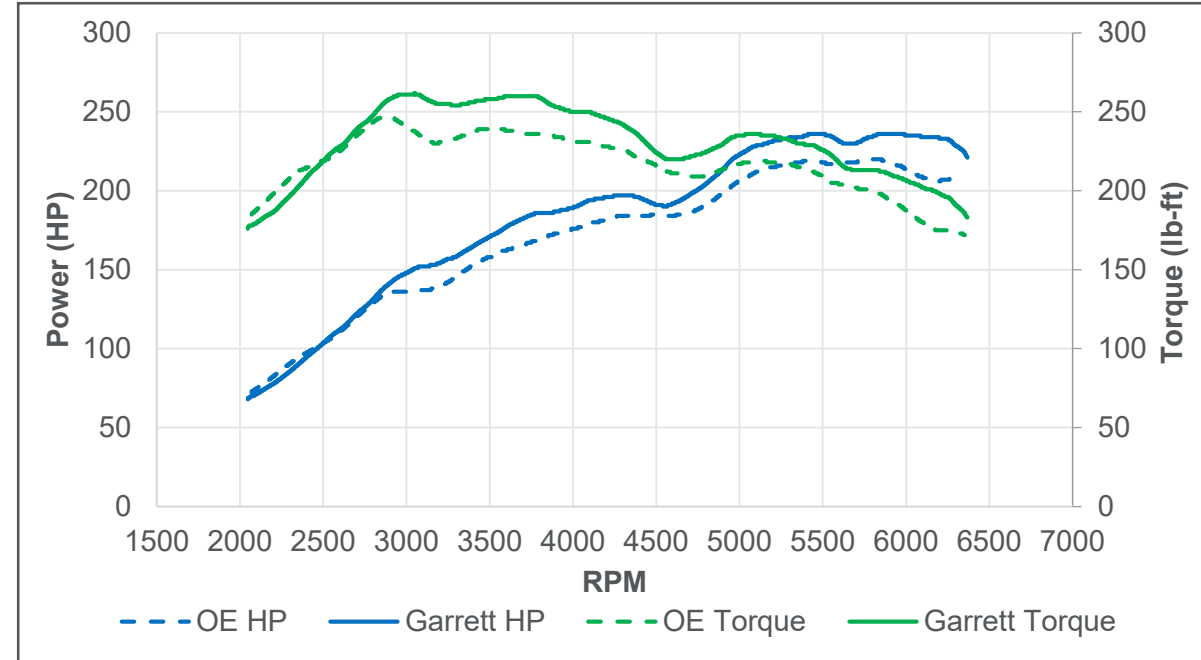
*Heat soak/saturation identifies the limit at which a CAC can no longer reduce charge air temperatures going into the engine.*



# Performance: Dyno Testing for Horsepower



**Up to 30 °F intake manifold temperature reduction**



**16 HP and 15 lb-ft performance gain**